



产品集景 THE PRODUCT GATHERS THE VIEW



FIG:A

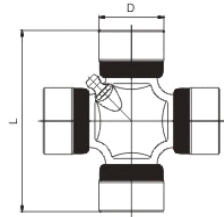


FIG:B

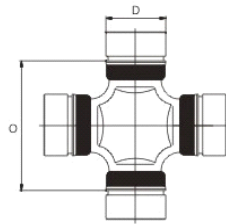


FIG:C

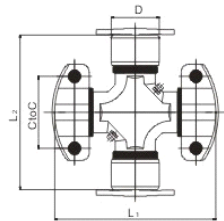


FIG:D

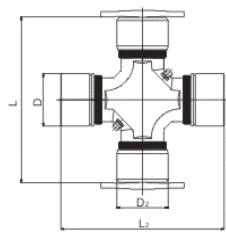


FIG:E

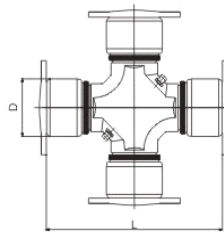


FIG:F

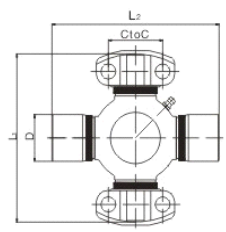


FIG:G

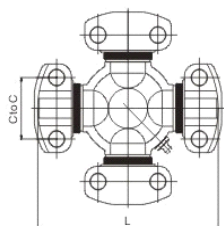


FIG:H

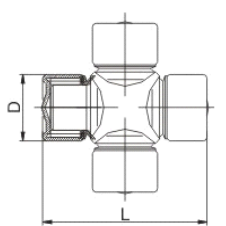


FIG:I

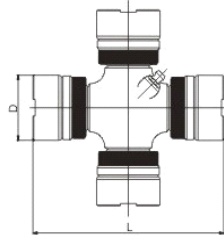
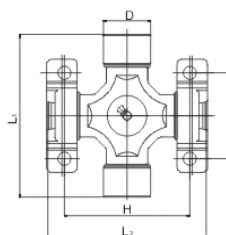


FIG:J





杭州新世纪万向节有限公司

HANGZHOU NEW CENTURY UNIVERSAL JOINT CO.,LTD

U-JOINT FOR U.S. VEHICLES

U-JOINT WITH 4 PLAIN ROUND BEARINGS AND 4 GROOVED ROUND BEARINGS

FIG	PART NO	D	O	L	SPICER	GMB	GKN	PRECISION
B	5-100X	25.4	38.5		5-100X	G5-100X		514
A	5-101X	23.82		61.3	5-101X	GU400	HS150	340
B	5-103X	23.83	35		5-103X	G5-103X	HS410	338
A	5-10X	30.188		106.35	5-10X	GU2050	HS179	330
A	5-111X	23.825		61.3	5-111X		HS194	ANF
A	5-113X	27		81.78	5-113X	G5-113X	HS166	369
B	5-1200X	27	57.4		5-1200X	G5-1200X		429
B	5-1201X	27/28.6	55.5		5-1201X	G5-1201X		430
B	5-1203X	27	67.6		5-1203X	G5-1203X		433
A/B	5-1204X	27/28.6	67.6	92	5-1204X			434
A	5-12062X	48.05		161	5-12062X		HS268	
B	5-1206X	30.188	76.28		5-1206X	G5-1206X		427
A	5-12072X	57.05		162.9	5-12072X			
A	5-12100X	45		120.4	5-12100X	GU7530	HS260	
A	5-121X	27		81.75	5-121X	G5-121X		
B	5-12213X	38	57.2		5-12213X	GU7300		
A	5-12219X	48.05		125.8	5-12219X	GU7620	HS272	
A	5-12276X	44.1		149	5-12276X			
A	5-12278X	50		164	5-12278X			
A	5-12924X	52		133	5-12924X	GU7560	HS282	
A	5-12932X	57.07		152	5-12932X	GU7630	HS289	
B	5-1301X	31.3	71.5		5-1301X	G5-1301X		304
B	5-1306X	27.4	50.9		5-1306X	G5-1306X	HS442	315G
B	5-1306X-1	27.4	50.8		5-1306X-1	G5-1306X-1	HS442	317
B	5-1309X	28.6	63.96		5-1309X	G5-1309X		316
A	5-1312X	28.6/28.58	91	60	5-1312X			375
B	5-1312X	28.6/28.58	91	60	5-1312X			375
A	5-13400X	23.825		61.3	5-111X			341
A	5-134X	27		92/81.7	5-134X	G5-134X		353
B	5-1501X	25.02	40		5-1501X	GUN27	HS420	391
B	5-1502X	26	42		5-1502X	GUT13	HS432	394
B	5-1503X	25.02	39.8		5-1503X			
B	5-1505X	28.02	52.9		5-1505X	GUN29	HS448	393
B	5-1506X	38	57.2		5-1506X	GU7300	HS480	463
B	5-1508X	26	53.6		5-1508X	GUT12	HS436	390
A	5-1509X	28.52		77.7	5-1509X	GUT14	HS172	396
B	5-1510X	29	49		5-1510X	GUT17	HS454	387
B	5-1511X	32	61		5-1511X	GUT20	HS470	389
B	5-1514X	22.52	34		5-1514X			385
A	5-1516X	25.02		76.44	5-1516X	GUM88	HS153	399
A	5-153X	27		81.78	5-153X	GU1000	HS166	369
A	5-155X	34.93		126.22	5-155X	G5-155X	HS275	358
A	5-160X	30.188		106.35	5-160X	GU2050	HS179	330
A	5-165X	41.24		142	5-165X	G5-165X	HS252	359
B	5-170X	23.83	34.85		5-170X	G5-170X	HS410	338
A	5-178X	30.188		92.075	5-178X	GU2200	HS182	331
A	5-188X	34.93		106.31	5-188X	GU2300	HS263	351
A	5-200X	27		81.78	5-200X	G5-200X	HS166	329
A/B	5-212X	27.02/28.6	60.2	92	5-212X	G5-212X		355
A	5-213X	27		92	5-213X	G5-213X		354
A/B	5-248X	25.39/27	38.6	62	5-248X			361
A	5-251X	27		81.75	5-251X	G5-251X	HS166	369

B	5-2532X	28.6	49		5-2532X			513
B	5-260X	27	52.5		5-260X	G5-260X	HS162	365
A	5-263X	34.93		106.31	5-263X	G5-263X	HS263	351
B	5-273X	27	67.6		5-273X	G5-273X		433
A	5-275X	34.93		126.22	5-275X	G5-275X	HS275	358
B	5-297X	30.2	52.5		5-297X	G5-297X	HS457	371
B	5-297X-1	30.2	52.5		5-297X-1	G5-297X-1	HS457	377
B	5-3011X	28.6	59.9		5-3011X		HS453	492
A/B	5-3022X	27/28.6	60.2	81.78	5-3022X			372
B	5-3147X	28.6	60.2		5-3147X	GU6370	HS451	534G
B	5-350X	27	56.8		5-350X			366
A/B	5-353X	27/27.4	50.8/56.8		5-353X	G5-353X		319
A	5-431X	33.3		67.48	5-431X	GGP-44R		888
A	5-443X	27.01		61.95	5-443X	G5-443X	HS197	437G
A/B	5-450X	27.01/27	52.5	81.78	5-450X			455
A	5-4X	27.009		74.6	5-4X	GU1100	HS195	344
A/B	5-544X	28.6/27	60	81.4	5-544X			372
B	5-74X	27	52.4		5-74X	G5-260X	HS441	356
B	5-92X	24.61	34.36		5-92X	GGPL-6R	HS416	861
A	GU1000	27		81.8	5-153X	GU1000	HS166	369
A	GU1100	27.01		74.6		GU1100	HS195	344
A	GU2000	30.188		106.35		GU2000	HS179	330
A	GU2050	30.188		106.35	5-160X	GU2050	HS179	330
A	GU2200	30.188		92.075	5-178X	GU2200	HS182	331
A	GU2300	34.93		106.31	5-188X	GU2300	HS263	351
B	GU2500	31.25	46		5-1300X			
A	GU3000	39.69		115.95				
A	GU3500	34.93		126.22		GU3500	HS176	370
A	GU3810	50		152.6				
A	GU3850	39		127				
A	GU4000	47.65		135		GU4000	HS316	
A	GU4470	42.12		104.5		U447		
A	GU5000	49.2		154.9		GU5000		
A	GU7280/4	24.09		74.55				
B	GU7300	38	57.2		5-1506X	U730	HS480	
A	GU7420	30		81.8				
A	GU7430	35		96.8		U743	HS222	
A	GU7440	38.03		105.6		U744	HS236	
B	GU7470	42	66					
A	GU7530	45		120.4			HS260	
A	GU7560	52.1		133		U756	HS282	
A	GU7610	53		135		U761	HS284	
A	GU7620	48.05		125.8		U762	HS272	
A	GU7630	57		152		U763	HS289	
A	GU7650	48		126		U765		
A	GU7670	48.03		115.5		U767		
A	GU8130	57		144		U813	HS288	
A	U990	57.07		152				
A	SPL140-1X	49.22		139				
A	SPL170-1X	55		165				
A	SPL250-1X	60		163				
A	SPL70-1X	34.9		126.1				
A	SPL90-1X	41.28		126				
A	ST1538	15		38				
A	ST1539	15		39				
A	ST1540	15		40				
A	ST1638	16		38				
A	ST1639	16		39				
A	ST1640	16		40				
A	ST1948	19		48				

U-JOINT WITH 2 WELDER PLATE TYPE AND 2 HIGH WING BEARINGS

FIG	PART NO.	D/CTOC	L1/L2	GMB	PRECISION	ROCKW-ELL	GKN	BEARING QUANTITY AND TYPE
C	5-324X	49.195/71.4	191.98/209.3	5-324X	480	CP18N96	HS794	2HWD 2RND
C	5-326X	55.55/71.4	206/209.3	3307	.	.	HS798	2HWD 2RND
C	5-353X	27/27.4	50.8/81.8	5-353X	319			

U-JOINT WITH 2 WELDER PLATE TYPE AND 2 PLAIN ROUND BEARINGS

FIG	PART NO	D	L1	L2	SPICER	PRECISION	NEAPCO	ROCKWELL
D	5-438X	47.618	135.005	135.005	5-438X	475	4-2791	CP16SI
D	5-515X	49.195	154.855	156.855	5-515X	476	5-2801	CP17SI
D	5-469X	49.195	177.98	179.98	5-469X	477	6-4071	CP176SI
D	5-510X	49.195	191.9	193.9	5-510X	478	6-2811	CP18SI
D	5-674X	47.618	135.6	135.6	5-674X	475	4-2791	CP16SI
D	5-675X	49.195	155.33	157.63	5-675X	476	5-2801	CP17SI
D	5-676X	49.195	192.38	194.68	5-676X	478	6-2811	CP18SI
D	5-677X	49.195	178.38	180.68	5-677X	477	6-4071	CP176SI

U-JOINT WITH 4 WELDER PLATE TYPE ROUND BEARINGS

FIG	PART NO	D	L	WX	PRECISION	GKN	ALLOY	ROCKWELL
E	5-115X	39.68	115.42	4225AF	332	HS308	1757	CP115X
E	5-279X	47.618	135	F	333	HS336	1807	CP16NS
E	5-279X-1	47.618	135	F	333	HS336	1807	CP16NS
E	5-280X	49.195	154.755	F	334	HS337	1802	CP17NS
E	5-280X-1	49.195	154.755	F	334	HS337	1802	CP17NS
E	5-407X	49.195	177.93	F	376	HS338	1808	CP176NS
E	5-407X-1	49.195	177.93	F	376	HS338	1808	CP176NS
E	5-281X	49.195	191.8	F	381	HS334	1810	CP18NS
E	5-281X-1	49.195	191.8	F	381	HS334	1810	CP18NS
E	5-124X	59	167.5	F	335	HS324	1804	CP124X
E	5-308X	55.5	206		388	HS348		

U-JOINT WITH 2 WING BEARINGS AND 2 GROOVED OR PLAIN ROUND BEARINGS

FIG	PART NO	D/CtoC	L1/L2	SPICER	PRECISION	ROCKWELL	CATERPILLAR	WING&ROUND BEARING TYPE
F	5-2031X	25.4/33.34	55.2/79.22	5-2031X	508	CP2031		2LWD,2RND
F	5-2033X	25.4/33.34	54.5/79	5-2033X	522	CP2033	6D2529	2LWD,2RND
F	5-4016X	28.5/36.5	77.9/108	5-4016X	546	CP4016X		2LWD,2RND
F	5-345X	30.18/36.5	106.29/107.9	5-345X				2HWD,2RND
F	5-154X	33.35/42.85	6					2HWD,2RND
F	W-6139	33.35/42.88	5		565			2HWD,2RND
F	5-303X	34.92/42.8	126.1/140.4	5-303X	470			2HWD,2RND
F	R221	34.92/42.8	126/140.4	5-221X	470		5Y0154	2HWD,2RND
F	HD205-3	41.5/49.2	104.5/148.4		483			2HWD,2RND
F	S-D868	27.03/32	41.6/67.2	S-D868				2HWD,2RND
F	UJ480	32.18/42.88	78.95/115.06					2HWD,2RND
F	UJ997	33.35/42.88	79/115.06					2HWD,2RND
F	5-330X	41.2/49.2	142/148.2	5-330X				2HWD,2RND
F	S-C673	52.37/71.6	174.2/179.6	S-C673				2HWD,2RND
F	S-C674	52.37/71.6	207.8/213.2	S-C674				2HWD,2RND

U-JOINT WITH 4 WING BEARINGS-----CATERPILLAR

FIG	Part No.	C	L	Series	BEARING TYPE	Interchange No.			
	(PRECISION)					SPICER	GKN	ALLOY	CATERPILLAR
G	951	33.34	79.37	2C	4LWT	5-2002X	HS520		1250
G	994	33.34	79.37		4LWD		HS521		316117
G	952	33.34	79.37		2LWT,2LWD	5-2116X	HS522	1063	6S6902
G	536	36.5	90.4	3C	4LWT	5-3000X	HS530	1711	5D9153
G	535	36.5	90.4		2LWT,2LWD	5-3014X	HS532		9K1976
G	966	36.5	90.4		2LWT,2HWD		HS533		
G	540	36.5	108	4C	4LWT	5-4002X	HS540	1703	6F7160
G	969	36.5	108		4HWD	5-4143X	HS545	1689	6K0316
G	541	36.5	108		2LWT,2LWD	5-4123X	HS542	1704	6H1262
G	929	36.5	108		2LWT,2HWD	5-4140X	HS543	J4130	5M0800
G	550	42.88	115.06		4LWT	5-5000X	HS550	1720	7J5251
G	968	42.88	115.06	4HWD	5-5177X	HS555	1728	2K3631	
G	552	42.88	115.06	2LWT,2LWD	5-5121X	HS552	1721	7J5245	

G	933	42.88	115.06	5C	2LWT,2HWD	5-5173X	HS553	1722	
G	486	49.22	130		4HWD				
G	896	49.22	134.8		2LWT,2HWD	5-5802X		1877	9C0398
G	560	42.88	140.45		4LWT	5-6000X	HS560	1820	
G	905	42.88	140.45		4HWD	5-6106X	HS565	1826	1S9670
G	563	42.88	140.45	6C	2LWT,2HWD	5-6102X	HS563	1822	
G		42.88	140.45						
G	493	49.22	148.4		2LWT,2LWT	5-6108X		1828	
G		42.88	140.45						
G	569	49.22	148.4		2LWT,2HWD	5-6109X		1829	
G		42.88	140.45						
G	568	49.22	148.4	6C X 7C	2LWD,2LWT				
G	570	49.22	148.4		4LWT	5-7000X	HS570	1841	8F7719
G	927	49.22	148.4	7C	4HWD	5-7105X	HS575	1840	2H0858
G	581	49.22	206.31		4LWT	5-8200X	HS580	1851	XX7146
G	584	49.22	206.31		4LWD	5-8203X	HS581	1854	
G	928	49.22	206.31		4HWD	5-8105X	HS585	1850	6H2579
G	582	49.22	206.31		2LWT, 2LWD	5-8201X	HS582	1852	
G	783	49.22	206.31	8C	2LWT, 2HWD	5-8202X	HS583	1853	
G	785	71.4	165		4LWT	5-8500X	HS680		7K0442
G	963	71.4	165		4HWD	5-8516X	HS685		2V7153
G	950	71.4	165	8.5C	2LWT, 2HWD		HS683		
G	793	71.4	209.51		4DWT	5-9000X	HS590	1864	9H9491
G	911	71.4	209.51		4HWD	5-9016X	HS595	1868	9V7710
G	792	71.4	209.51	9C	2LWT, 2HWD	5-9002X	HS593	1865	
G	988	92	212.6	10C	4HWD				